

# I Business Case Facility Drawings

## Concept Scenario Drawings

CS.1	Concept Scenario 1	P4
CS.2	Concept Scenario 1 Site Plan	P4
CS.3	Aerial Site CS1	P3
CS.4	Concept Scenario 2B	P5
CS.5	Concept Scenario 2B Site Plan	P4
CS.6	Aerial Site CS2B	P4
CS.7	Concept Scenario 3C	P4
CS.8	Concept Scenario 3C First Floor	P4
CS.9	Concept Scenario 3C Site Plan	P4
CS.10	Aerial Site CS3C	P3
CS.11	Parking Option 1_ On-Grade	P4
CS.12	Parking Option 2_ Deck	P4
CS.13	Parking Option 3_ Underground & On-Grade	P5
CS.14	Parking Option 4_ Underground	P5
CS.15	Parking Option 5_ 3 Level Deck	P8
CS.16	Parking Option 6_ 3 Level Deck	P8
CS.17	Perspective Renderings	Revision A

## Facility Space Drawings

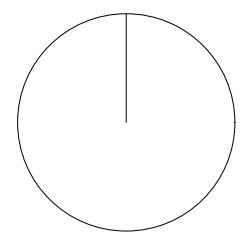
FS.1	Facility Space Diagrams – Zones 1 & 2	P1
FS.2	Facility Space Diagrams – Zones 3 & 4	P1
FS.3	Facility Space Diagrams – Zones 5	P1
FS.4	Facility Space Diagrams – Zones 6, 7 & 9	P1
FS.5	Facility Space Diagrams – Zones 8	P1
FS.6	Building Area Comparison	P2
FS.7	Venue Space Comparisons	P1
FS.8	Venue Space Comparisons	P1

**Existing Condition Plans**

Note: These drawings are compilations of previous documents and have not been verified dimensionally. They may not represent the current existing conditions and cannot be relied upon for design or construction purposes.

EX.1	Location Plan	P1
EX.2	Site Plan	P1
EX.3	Basement and Ground Floor Plan	P1
EX.4	First Floor Plan	P1
EX.5	Grid Floor Plan	P1
EX.6	Roof Plan	P1
EX.7	Sections	P1





#### KEY

- FOYER / PUBLIC CIRCULATION
- TOILETS
- VENUES / FUNCTIONS
- BACKSTAGE / VENUE SUPPORT
- ADMINISTRATION / SERVICES
- EXISTING BUILDING OUTLINE



**williams ross architects**

City of Whitehorse  
Whitehorse Centre Business Case

Concept Scenario 1



CARTER AV

CARTER AV

CONTROLLED TRUCK EXIT  
TO CARTER AVENUE

RESIDENTIAL PROPERTIES

WALKER  
PARK

HUMPHREYS  
AVENUE

POLICE STATION

CIVIC CENTRE / LIBRARY

MAROONDAH HIGHWAY

**williams ross architects**

City of Whitehorse  
Whitehorse Centre Business Case

Concept Scenario 1 Site Plan

April 2013  
1:250 @ A1  
1306

CS.2 P4





Image © 2014 Sinclair Knight Mertz & Fugro

Whitehorse Centre

**williams ross** architects

City of Whitehorse  
Whitehorse Centre Business Case

Aerial Site CS1

Suite 1, 70 Kerr Street  
Fitzroy Victoria 3065  
Australia  
T 61 3 9416 3044  
F 61 3 9416 3232  
www.williamsross.com

April 2013  
1:500 @ A1  
1306

CS.3 P3





- KEY
- FOYER / PUBLIC CIRCULATION
  - TOILETS
  - VENUES / FUNCTIONS
  - BACKSTAGE / VENUE SUPPORT
  - ADMINISTRATION / SERVICES
  - EXISTING BUILDING OUTLINE

**williams ross architects**

City of Whitehorse  
Whitehorse Centre Business Case

Concept Scenario 2B

April 2013  
1:250 @ A1  
1306

CS.4 P5



CARTER AV

CARTER AV

RESIDENTIAL PROPERTIES

WALKER  
PARK

HUMPHREYS  
AVENUE

POLICE STATION

CIVIC CENTRE / LIBRARY

MAROONDAH HIGHWAY

**williams ross architects**

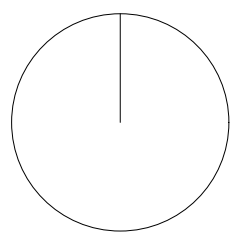
City of Whitehorse  
Whitehorse Centre Business Case

Concept Scenario 2B Site Plan

April 2013  
1:500 @ A1  
1306

CS.5 P4









KEY

- FOYER / PUBLIC CIRCULATION
- TOILETS
- VENUES / FUNCTIONS
- BACKSTAGE / VENUE SUPPORT
- ADMINISTRATION / SERVICES
- EXISTING BUILDING OUTLINE

**williams ross architects**

City of Whitehorse  
Whitehorse Centre Business Case

Concept Scenario 3C

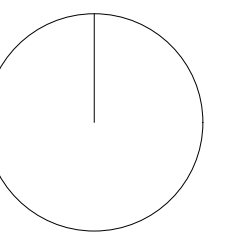
April 2013

1:250 @ A1

1306

CS.7 P4





#### KEY

- FOYER / PUBLIC CIRCULATION
- TOILETS
- VENUES / FUNCTIONS
- BACKSTAGE / VENUE SUPPORT
- ADMINISTRATION / SERVICES
- EXISTING BUILDING OUTLINE



**williams ross architects**

City of Whitehorse  
Whitehorse Centre Business Case

Concept Scenario 3C First Floor



CARTER AV

WALKER  
PARK

HUMPHREYS AVENUE

POLICE STATION

MAROONDAH HIGHWAY

CIVIC CENTRE / LIBRARY

CONCERT LAWN

SOUND SHELL

REHEARSAL RM

BACKSTAGE

STAGE

STUDIO THEATRE

AUDITORIUM

OUTDOOR FOYER

CAFE / BAR

FOYER

BOX

MEETING RM

NEW COURTYARD ROOM

FOH OFFICES

CENTRE OPERATIONS

PLANT

DROP OFF

CAR PARK

NEW FORECOURT

ENTRY

LOADING DOCK

SCENE DOCK

SCENE DOCK

SCENE DOCK

SCENE DOCK

SCENE DOCK

SCENE DOCK

SCENE DOCK

SCENE DOCK

SCENE DOCK

SCENE DOCK

SCENE DOCK

SCENE DOCK

SCENE DOCK

SCENE DOCK

**williams ross architects**

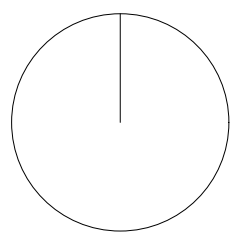
City of Whitehorse  
Whitehorse Centre Business Case

Concept Scenario 3C Site Plan

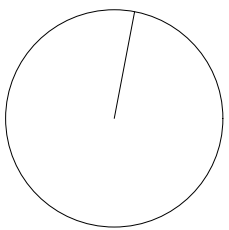
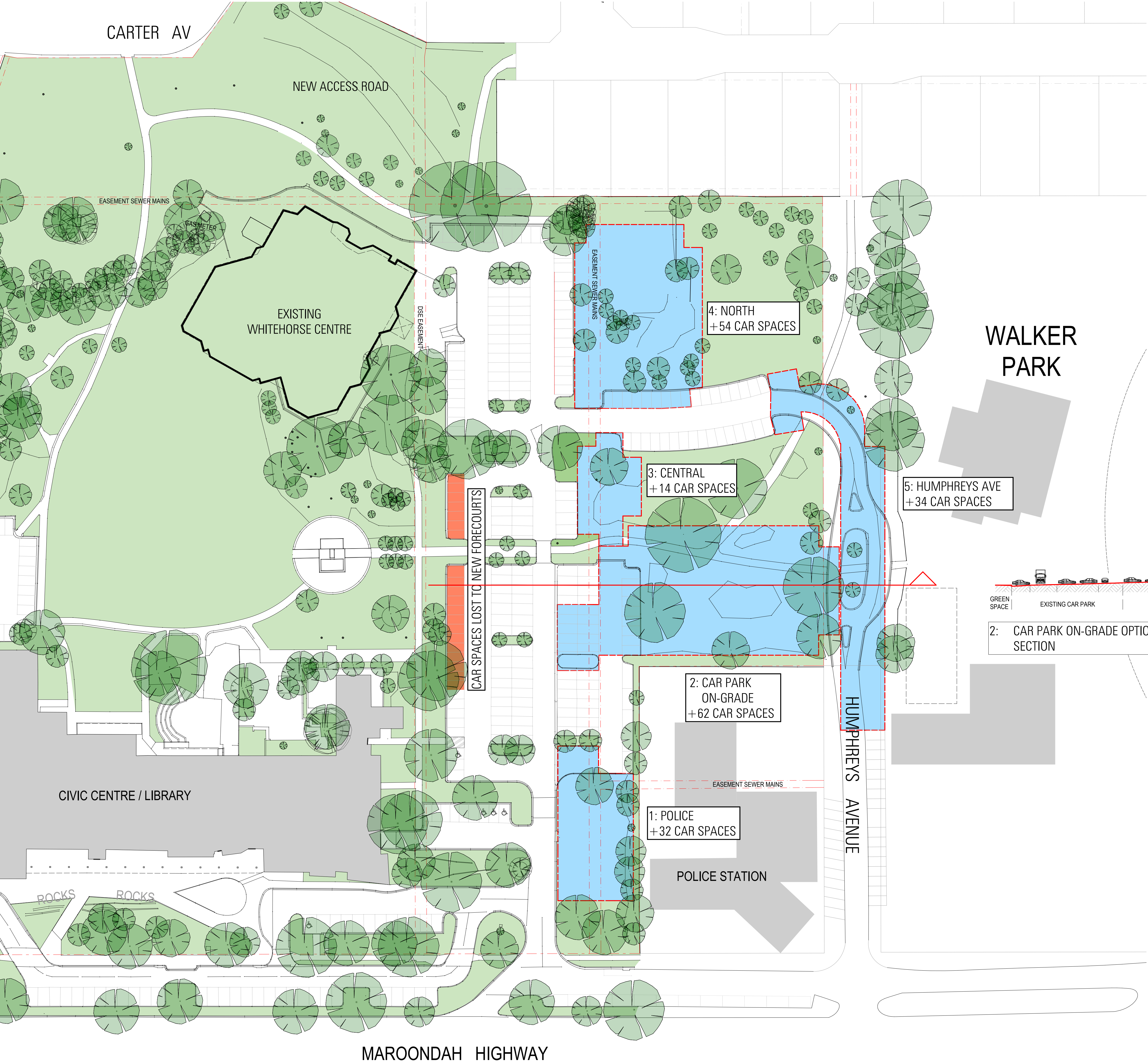
April 2013  
1:250 @ A1  
1306

CS.9 P4









Copyright of this drawing is vested in Williams  
Ross Architects and the drawing shall not be  
reproduced or copied in whole or in part, in any  
form, without the prior written approval of  
Williams Ross Architects. The Contractor must  
verify all dimensions on site prior to commencing  
the relevant work or preparing any shop drawings.  
Do not scale off drawings.

Suite 1, 70 Kerr Street  
Fitzroy Victoria 3065  
Australia  
T 61 3 9416 3044  
F 61 3 9416 3232  
www.williamsross.com

- NEW CARPARKING / SPACES
- FORECOURTS IN VARIOUS SCENARIOS  
NUMBERS NEED TO BE MADE  
UP FOR LOSSES

REQUIRED ADDITIONAL CAR SPACES	
CENTRE	141
INFORMAL	34
TOTAL ADDITIONAL + LOSSES	175

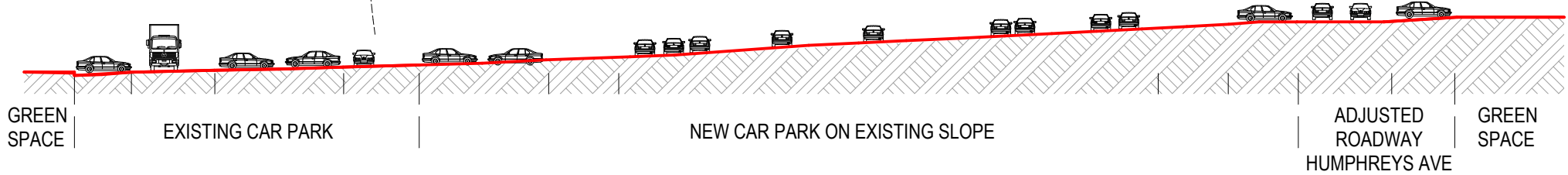
ADDITIONAL CAR SPACES  
(INCL LOSSES)

OPTION 1: ON-GRADE	
1. POLICE	+32
2. CAR PARK ON GRADE	+62
3. CENTRAL	+14
4. NORTH	+54
5. HUMPHREYS AVE	+34

SHARED ZONE FOR ACC. SPACES	-2
--------------------------------	----

SPACES LOST TO FORECOURTS  
VARIOUS SCENARIOS -14 to -17

TOTAL	+177 to 180
EXISTING	+381
TOTAL	+558 to 561



2: CAR PARK ON-GRADE OPTION  
SECTION

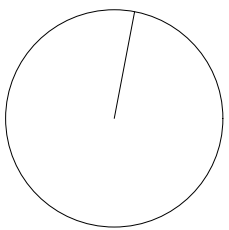
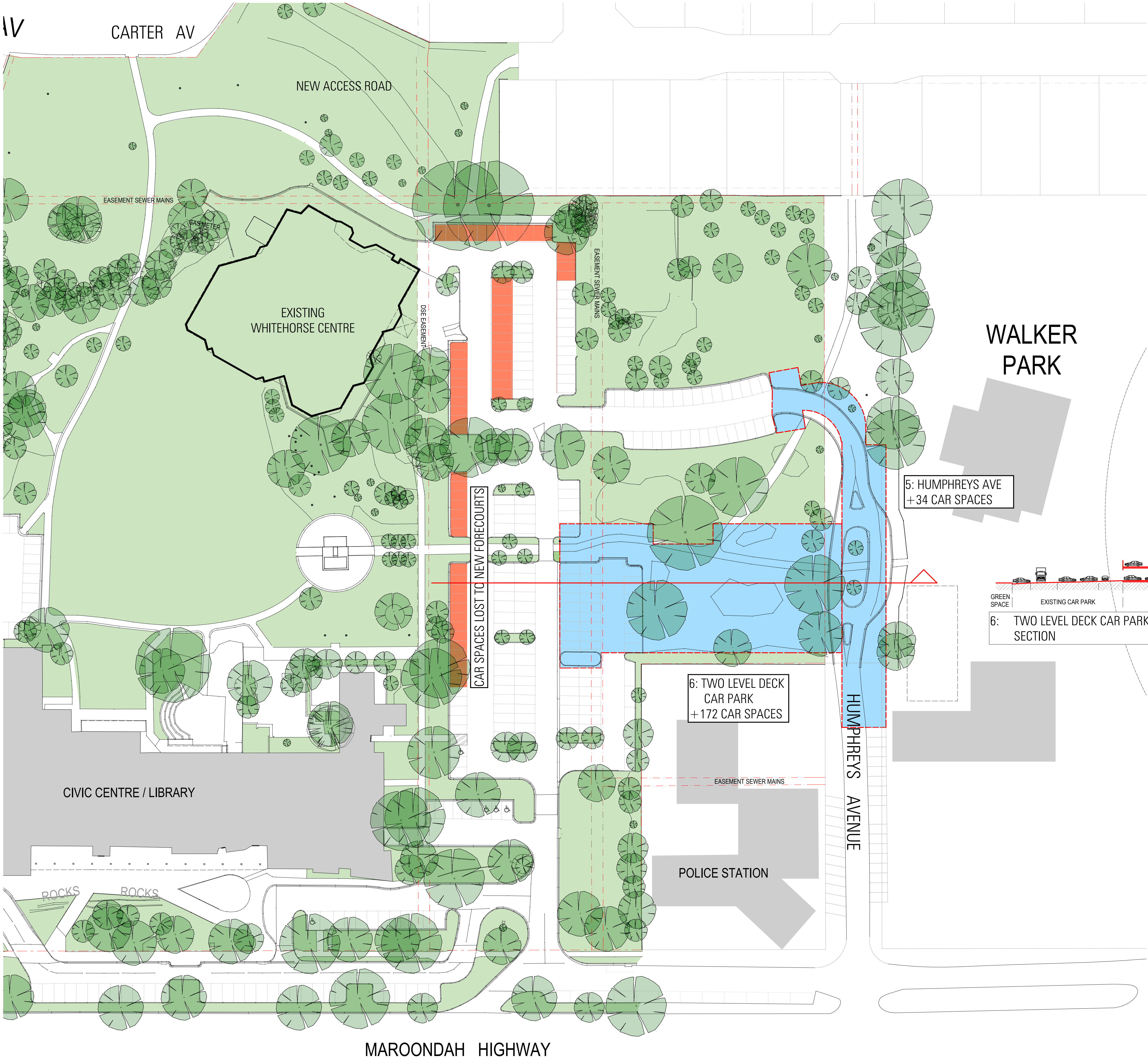
**williams ross architects**

City of Whitehorse  
Whitehorse Centre Business Case

Parking Option 1: On-Grade

April 2013  
1:500  
1306





Copyright of this drawing is vested in Williams  
Ross Architects and the drawing shall not be  
reproduced or copied in whole or in part, in any  
form, without the prior written approval of  
Williams Ross Architects. The Contractor must  
verify all dimensions on site prior to commencing  
the relevant work or preparing any shop drawings.  
Do not scale off drawings.

Suite 1, 70 Kerr Street  
Fitzroy Victoria 3065  
Australia  
T 61 3 9416 3044  
F 61 3 9416 3232  
www.williamsross.com

- NEW CARPARKING / SPACES
- FORECOURTS IN VARIOUS SCENARIOS  
NUMBERS NEED TO BE MADE UP  
FOR LOSSES

REQUIRED ADDITIONAL CAR SPACES	
CENTRE	141
INFORMAL	34
TOTAL ADDITIONAL + LOSSES	175

ADDITIONAL CAR SPACES  
(INCL LOSSES)

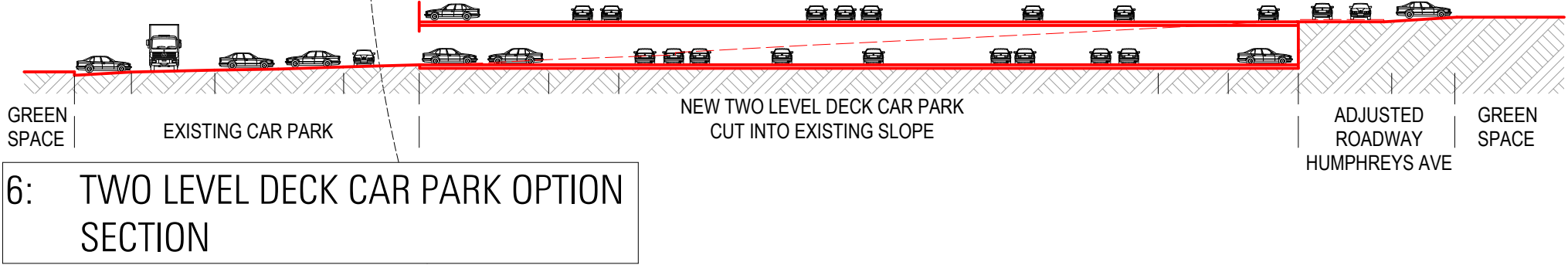
OPTION 2: DECK CAR PARKING	
5. HUMPHREYS AVE	+ 34
6. 2 LEVEL DECK CAR PARK	+172

SHARED ZONE FOR ACC. SPACES	
	-2

SPACES LOST TO FORECOURTS VARIOUS SCENARIOS	
	-14 to -17

TOTAL	+ 187 to 190
-------	--------------

EXISTING	+381
TOTAL	+ 568 to 571



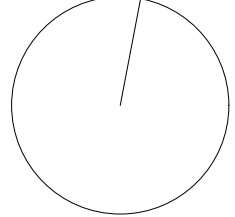
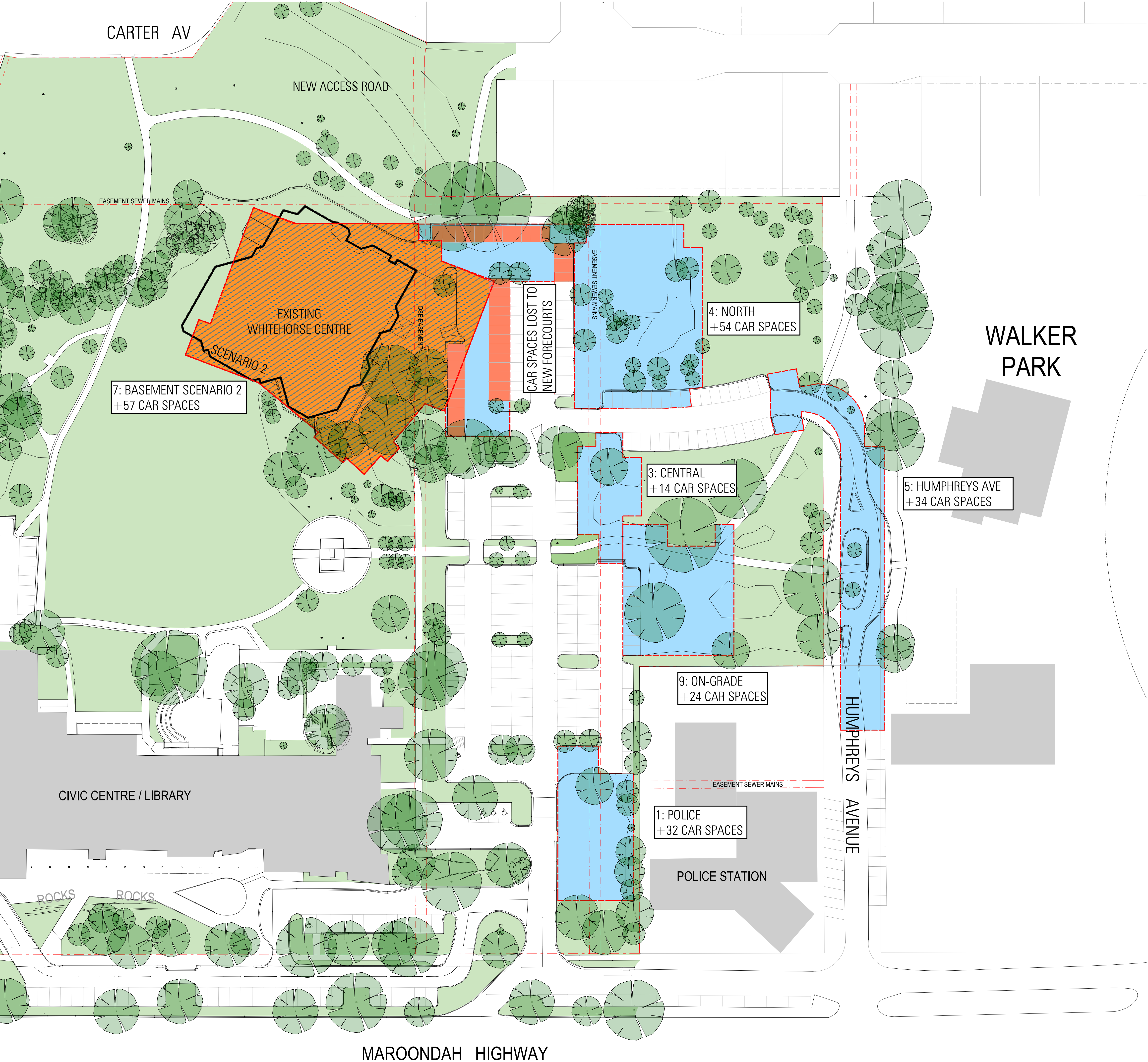
**williams ross architects**

City of Whitehorse  
Whitehorse Centre Business Case

Parking Option 2: Deck

April 2013  
1:500  
1306





Copyright of this drawing is vested in Williams  
Ross Architects and the drawing shall not be  
reproduced or copied in whole or in part, in any  
form, without the prior written approval of  
Williams Ross Architects. The Contractor must  
verify all dimensions on site prior to commencing  
the relevant work or preparing any shop drawings.  
Do not scale off drawings.

Suite 1, 70 Kerr Street  
Fitzroy Victoria 3065  
Australia  
T 61 3 9416 3044  
F 61 3 9416 3232  
www.williamsross.com

- NEW CARPARKING / SPACES
- FORECOURTS IN VARIOUS SCENARIOS  
NUMBERS NEED TO BE MADE UP FOR LOSSES
- NEW BUILDING FOOTPRINT
- UNDERGROUND CAR PARKING

REQUIRED ADDITIONAL CAR SPACES	
CENTRE	141
INFORMAL	34
TOTAL ADDITIONAL	175
+ LOSSES	

ADDITIONAL CAR SPACES (INCL LOSSES)	

OPTION 3: BASEMENT	
1. POLICE	+32
3. CENTRAL	+14
4. NORTH	+54
5. HUMPHREYS AVE	+34
7. CS2 BASEMENT	+57
9. ON-GRADE	+24

SHARED ZONE FOR ACC. SPACES	
	-2

SPACES LOST TO FORECOURTS SCENARIO 2	
	-38

TOTAL	+175
-------	------

EXISTING	+381
TOTAL	+556

**williams ross architects**

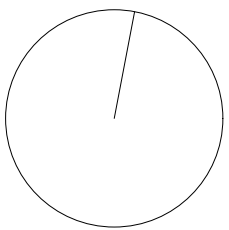
City of Whitehorse  
Whitehorse Centre Business Case

Parking Option 3:  
Underground & On-grade

April 2013  
1:500  
1306

CS.13 P5





Copyright of this drawing is vested in Williams Ross Architects and the drawing shall not be reproduced or copied in whole or in part, in any form, without the prior written approval of Williams Ross Architects. The Contractor must verify all dimensions on site prior to commencing the relevant work or preparing any shop drawings. Do not scale off drawings.

Suite 1, 70 Kerr Street  
Fitzroy Victoria 3065  
Australia  
T 61 3 9416 3044  
F 61 3 9416 3232  
www.williamsross.com

- NEW CARPARKING / SPACES
- FORECOURTS IN VARIOUS SCENARIOS  
NUMBERS NEED TO BE MADE UP FOR LOSSES
- NEW BUILDING FOOTPRINT
- UNDERGROUND CAR PARKING

REQUIRED ADDITIONAL CAR SPACES	
CENTRE	141
INFORMAL	34
TOTAL ADDITIONAL	175
+ LOSSES	

ADDITIONAL CAR SPACES (INCL LOSSES)	
--	--

OPTION 3: BASEMENT	
5. HUMPHREYS AVE	+ 34
8. CS3 BASEMENT	+162

SHARED ZONE FOR ACC. SPACES	-2
--------------------------------	----

SPACES LOST TO FORECOURTS SCENARIO 3	-14
---	-----

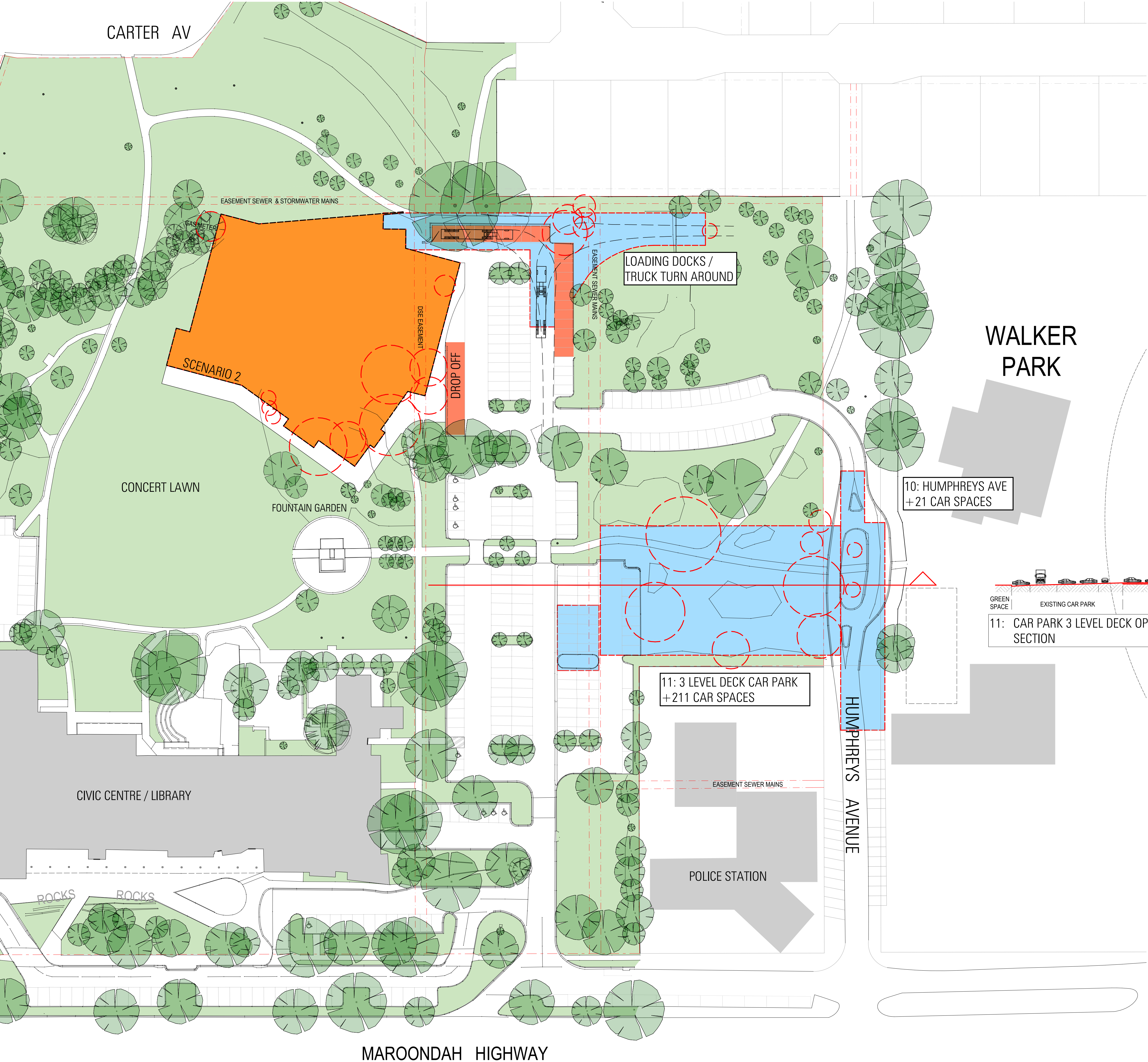
TOTAL	+180
-------	------

EXISTING	+381
TOTAL	+561

**williams ross architects**

City of Whitehorse  
Whitehorse Centre Business Case  
Parking Option 4:  
Underground





- NEW CARPARKING / ROADWAY
- CAR PARKS REMOVED -  
NUMBER TO BE MADE UP

REQUIRED ADDITIONAL CAR SPACES	
CENTRE	141
INFORMAL	34
TOTAL ADDITIONAL + LOSSES	175

ADDITIONAL CAR SPACES  
(INCL LOSSES)

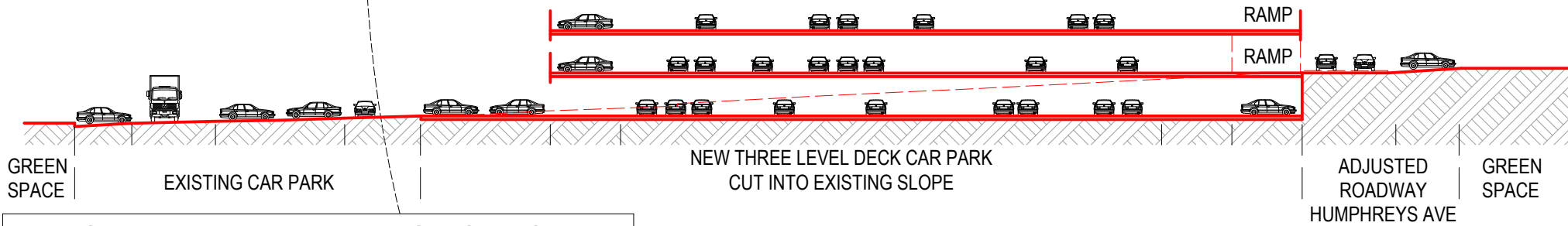
OPTION 5: 3 LEVEL DECK	
10. HUMPHREYS AVE	+ 21
11. 3 LEVEL DECK	+211

SHARED ZONE FOR ACC. SPACES	- 2
--------------------------------	-----

SPACES LOST	- 33
-------------	------

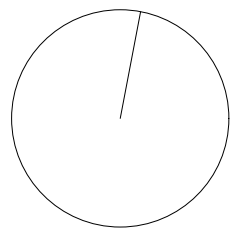
TOTAL	+197
-------	------

EXISTING	+381
TOTAL	+578



11: CAR PARK 3 LEVEL DECK OPTION  
SECTION





Copyright of this drawing is vested in Williams Ross Architects and the drawing shall not be reproduced or copied in whole or in part, in any form, without the prior written approval of Williams Ross Architects. The Contractor must verify all dimensions on site prior to commencing the relevant work or preparing any shop drawings. Do not scale off drawings.

Suite 1, 70 Kerr Street  
Fitzroy Victoria 3065  
Australia  
T 61 3 9416 3044  
F 61 3 9416 3232  
www.williamsross.com

- NEW CARPARKING / ROADWAY
- CAR PARKS REMOVED - NUMBER TO BE MADE UP

REQUIRED ADDITIONAL CAR SPACES	
CENTRE	141
INFORMAL	34
TOTAL ADDITIONAL + LOSSES	175

ADDITIONAL CAR SPACES (INCL LOSSES)

OPTION 6: 3 LEVEL DECK	
10. HUMPHREYS AVE	+ 21
12. 3 LEVEL DECK	+200

SHARED ZONE FOR ACC. SPACES	- 2
-----------------------------	-----

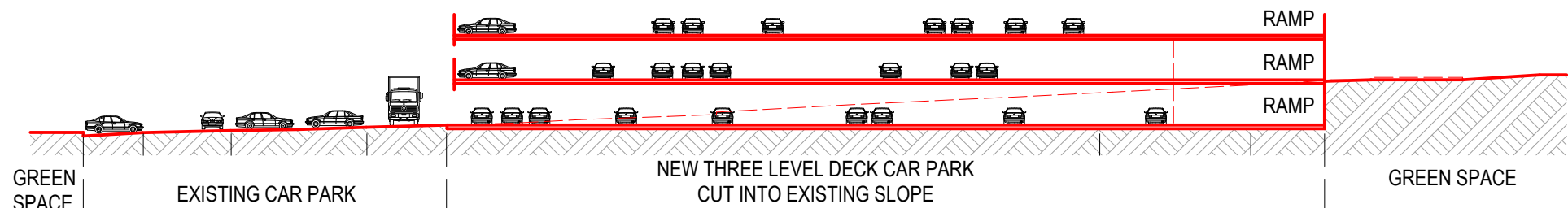
SPACES LOST	- 35
-------------	------

TOTAL	+184
-------	------

EXISTING	+381
TOTAL	+565

WALKER PARK

10: HUMPHREYS AVE  
+21 CAR SPACES



12: CAR PARK 3 LEVEL DECK OPTION SECTION

**williams ross architects**

City of Whitehorse  
Whitehorse Centre Business Case  
Parking Option 6: 3 Level Deck





Foyer - Entry View



Functions - Auditorium - Studio Section



Foyer - Proscenium Theatre - Backstage Section

**williams ross architects**

City of Whitehorse  
Whitehorse Centre Business Case

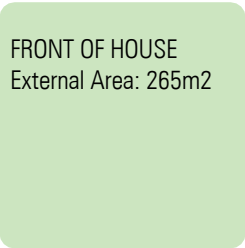
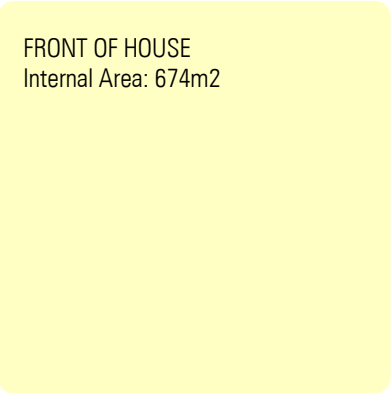
Perspective Renderings

Sept 2014  
NTS  
1306

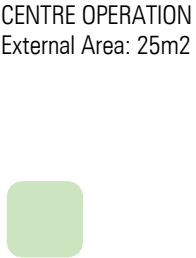
CS.17



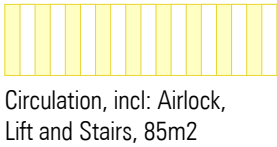
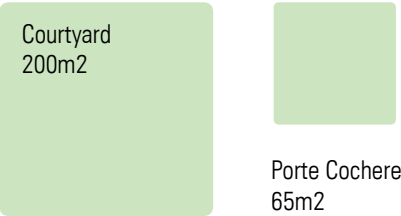
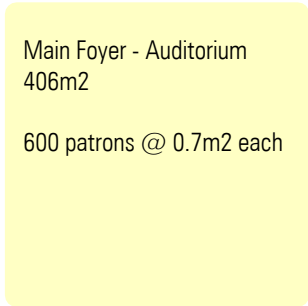
ZONE 1: FRONT OF HOUSE



ZONE 2: CENTRE OPERATION



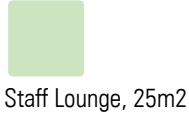
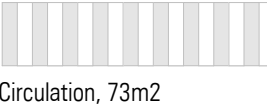
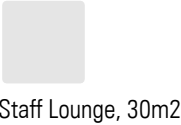
FUNCTIONAL SPACES



FUNCTIONAL SPACES  
FRONT OF HOUSE

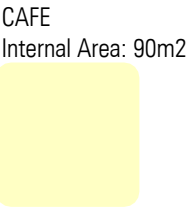


ADMINISTRATION

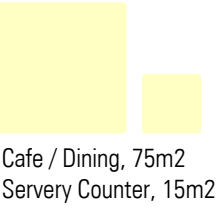




ZONE 3: FOOD & BEVERAGE SERVICES

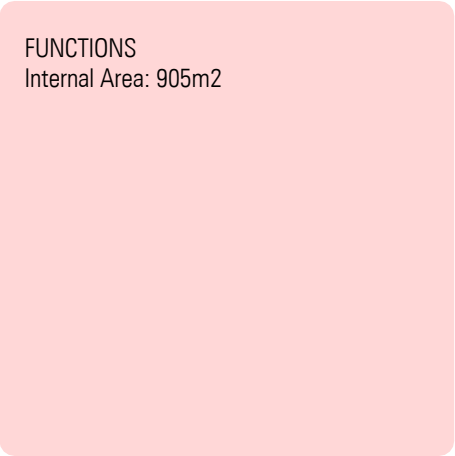


FUNCTIONAL SPACES

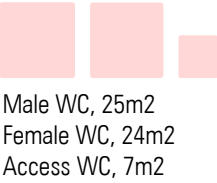
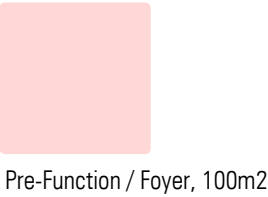
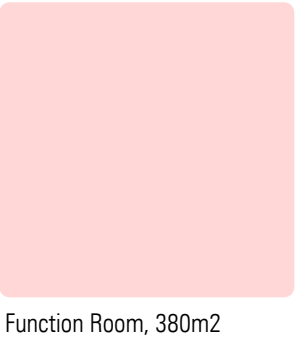


ZONE 4: FUNCTIONS / REHEASAL & MEETING ROOMS

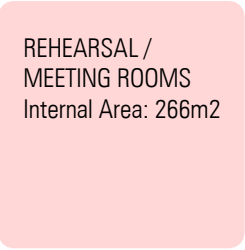
ZONE 4: FUNCTIONS



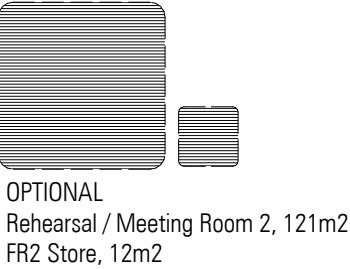
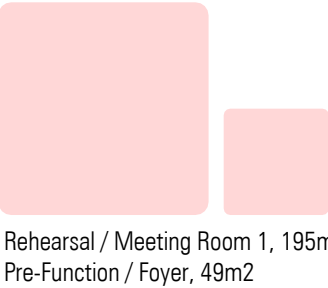
FUNCTIONAL SPACES



ZONE 4: REHEARSAL & MEETING ROOMS



FUNCTIONAL SPACES



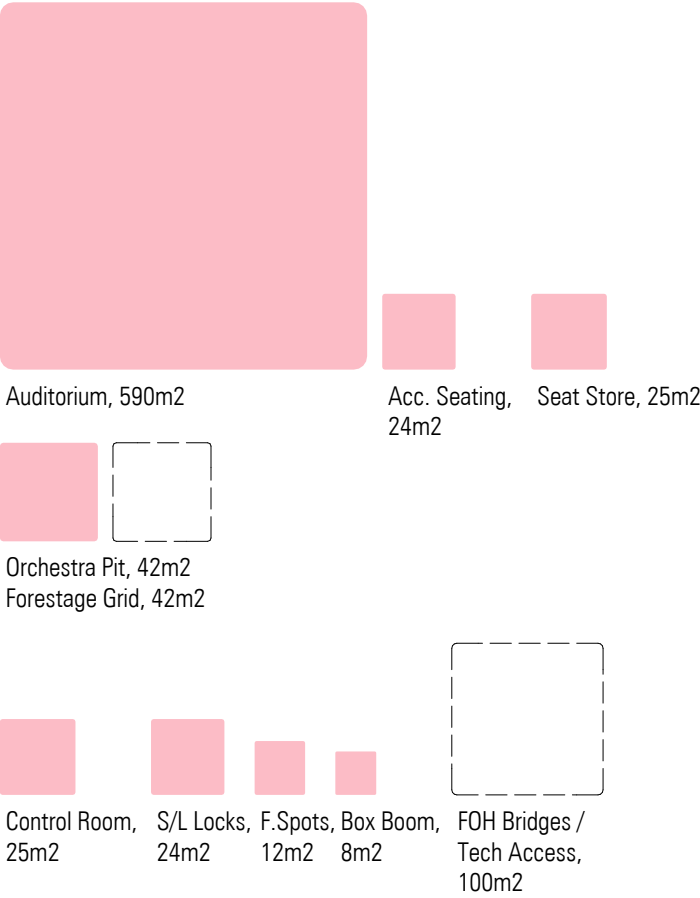


ZONE 5: PROSCENIUM AUDITORIUM /STAGEHOUSE

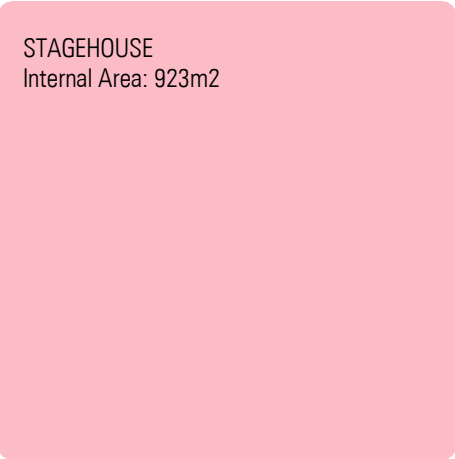
ZONE 5: PROSCENIUM AUDITORIUM



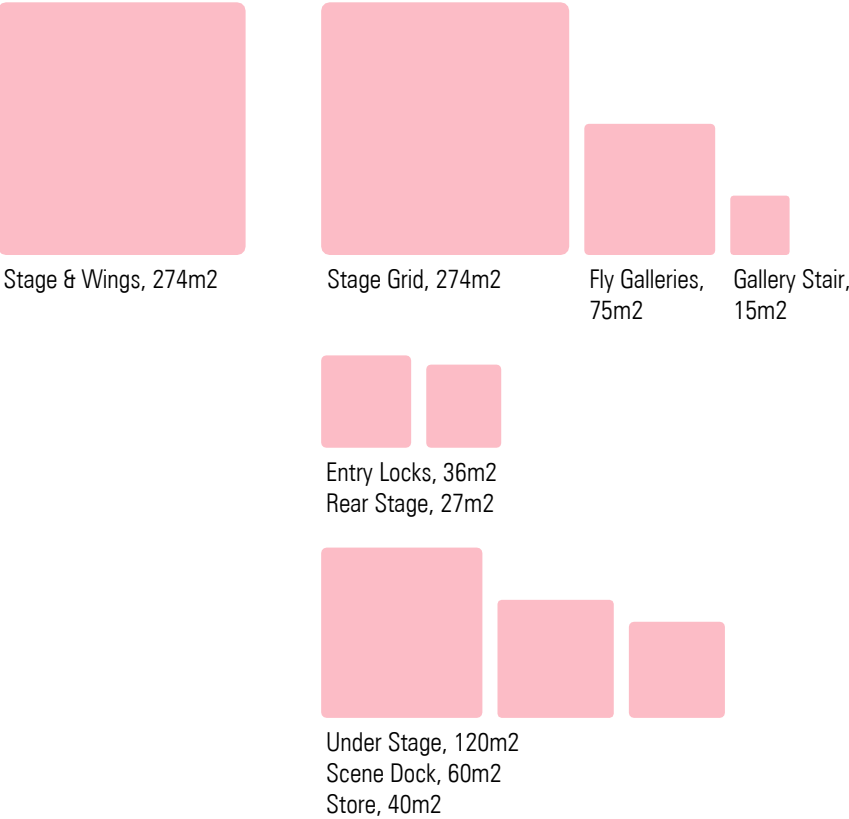
FUNCTIONAL SPACES



ZONE 5: STAGEHOUSE



FUNCTIONAL SPACES



STAGEHOUSE  
External Area: 100m2



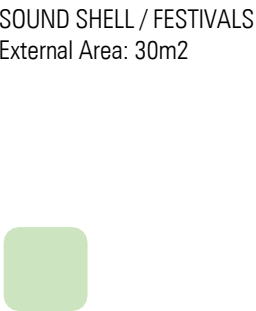
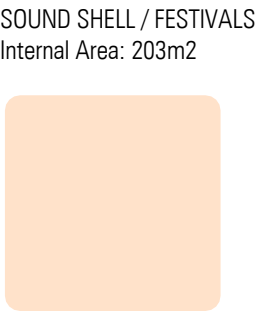
Loading Dock, 100m2



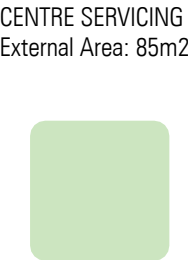
ZONE 6: STUDIO THEATRE



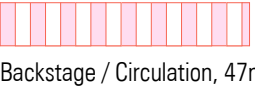
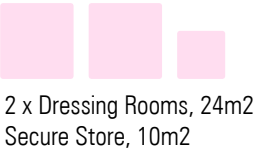
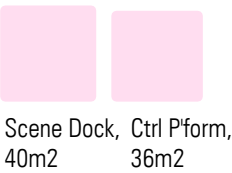
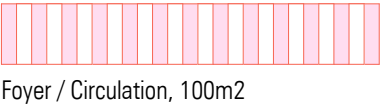
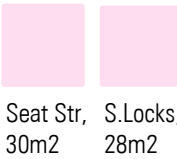
ZONE 7: SOUND SHELL / FESTIVALS



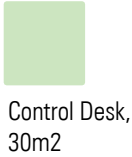
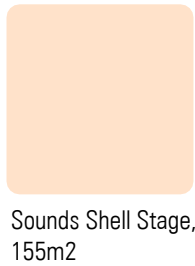
ZONE 9: CENTRE SERVICING



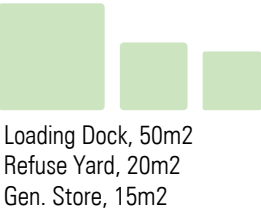
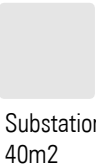
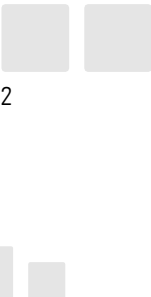
FUNCTIONAL SPACES



FUNCTIONAL SPACES



FUNCTIONAL SPACES

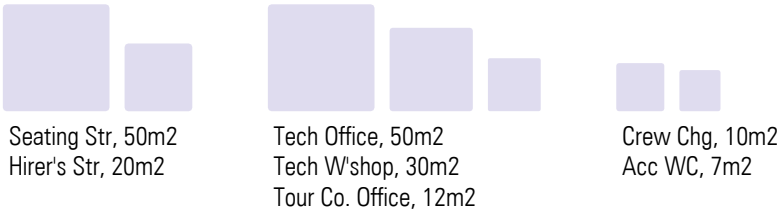




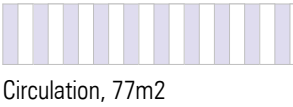
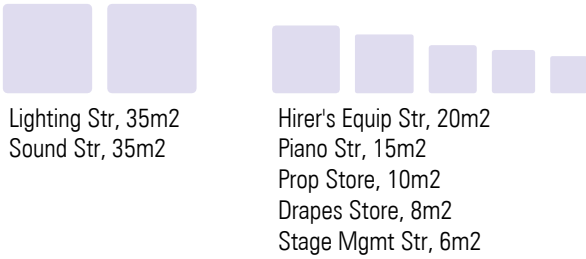
ZONE 8: PRODUCTION / STAGE SUPPORT - BACKSTAGE



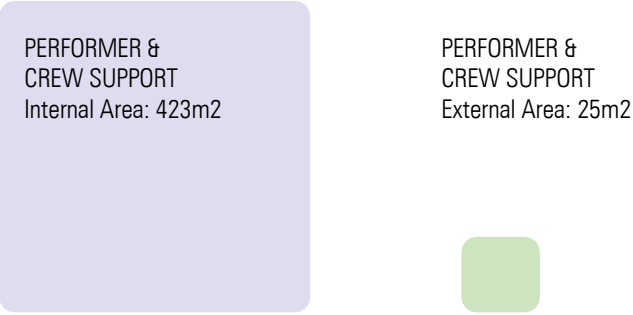
FUNCTIONAL SPACES  
PRODUCTION / STAGE SUPPORT - BACKSTAGE



STAGE STORES



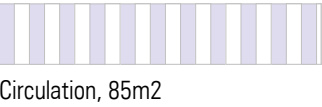
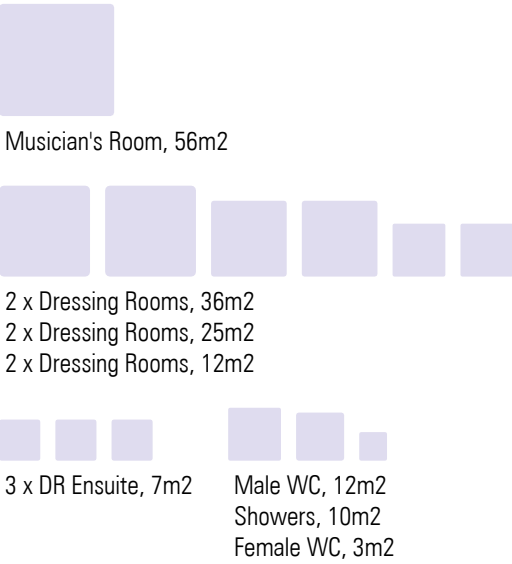
ZONE 8: PERFORMER & CREW SUPPORT - BACKSTAGE



FUNCTIONAL SPACES  
PERFORMER & CREW SUPPORT - BACKSTAGE



PROSCENIUM THEARE





CARTER AV

MAINS POWER

EASEMENT SEWER MAINS

WATER

USE EASEMENT

STORE  
SHEDS

WALKER  
PARK

WHITEHORSE CENTRE  
EXISTING BUILDING FOOTPRINT:  
1,957m<sup>2</sup>

NEW BUILDING FOOTPRINT:  
3,217m<sup>2</sup>

WATER  
FIRE SERVICES

TEST TPA CABLE

EASEMENT SEWER MAINS

POLICE STATION

HUMPHREYS AVENUE

CIVIC CENTRE / LIBRARY

ROCKS  
ROCKS

MAROONDAH HIGHWAY

Copyright of this drawing is vested in Williams  
Ross Architects and the drawing shall not be  
reproduced or copied in whole or in part, in any  
form, without the prior written approval of  
Williams Ross Architects. The Contractor must  
verify all dimensions on site prior to commencing  
the relevant work or preparing any shop drawings.  
Do not scale off drawings.

Suite 1, 70 Kerr Street  
Fitzroy Victoria 3065  
Australia  
T 61 3 9416 3044  
F 61 3 9416 3232  
www.williamsross.com

**williams ross architects**

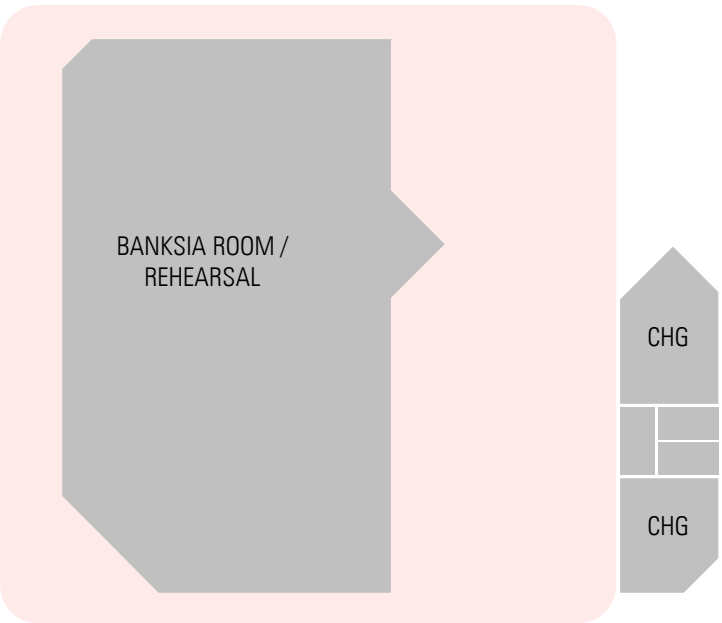
City of Whitehorse  
Whitehorse Centre Business Case  
2013

Building Area Comparison

April 2013  
1:1000@ A3  
1306

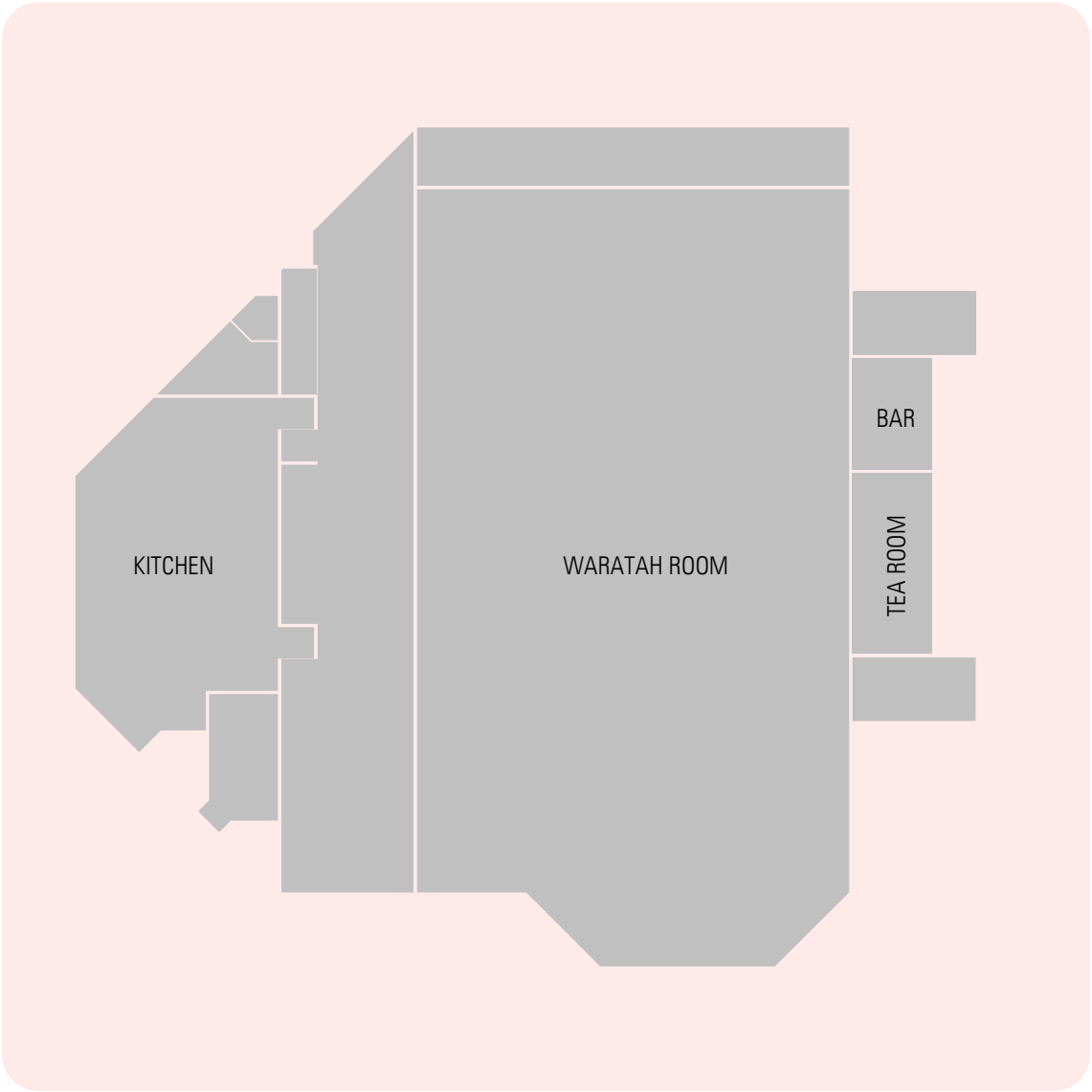
FS.6 P2





REHEARSAL / MEETING ROOM

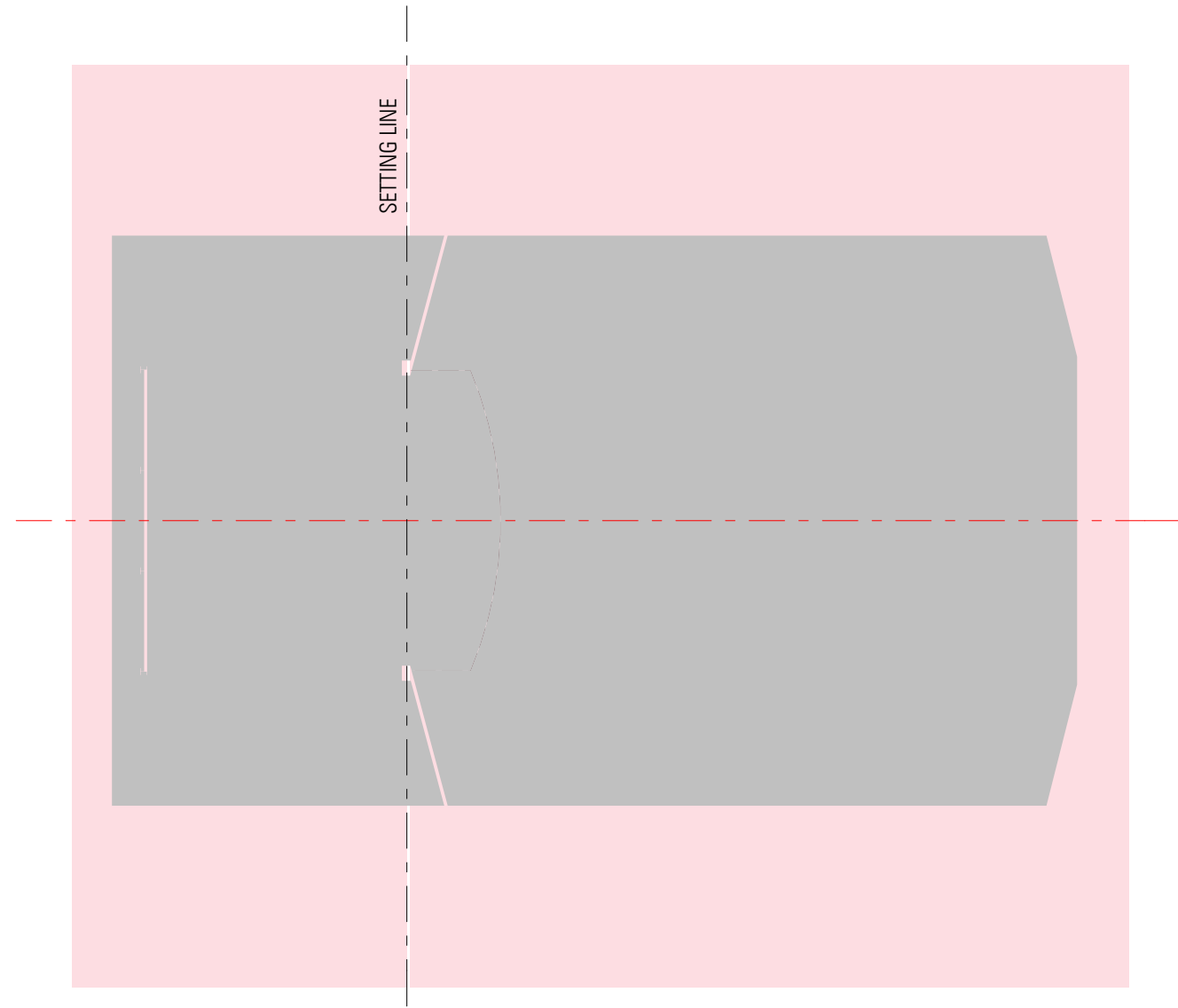
Existing Total: 146m2  
New Total: 266m2



FUNCTIONS

Existing Total: 423m2  
New Total: 905m2



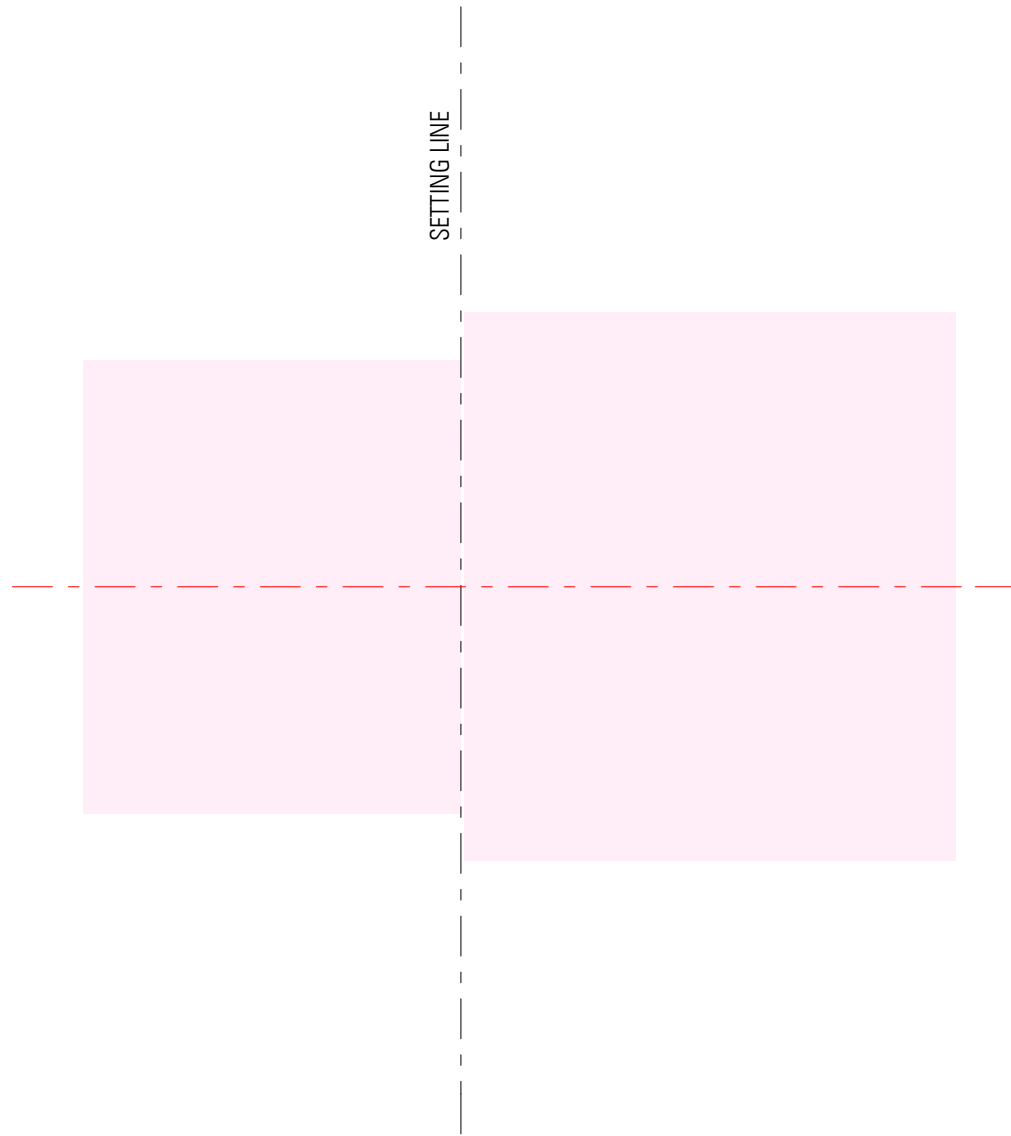


PROSCENIUM THEATRE -  
STAGE & WINGS

Existing Total: 174m2  
New Total: 275m2

AUDITORIUM

Existing Total: 309m2  
New Total: 590m2



STUDIO THEATRE -  
STAGE

New Total: 120m2

AUDITORIUM

New Total: 183m2





WHITEHORSE  
CENTRE

Ground Floor  
1,957 m<sup>2</sup>

CIVIC CENTRE / LIBRARY

POLICE  
STATION

**williams ross architects**

City of Whitehorse  
Whitehorse Centre Business Case  
2013

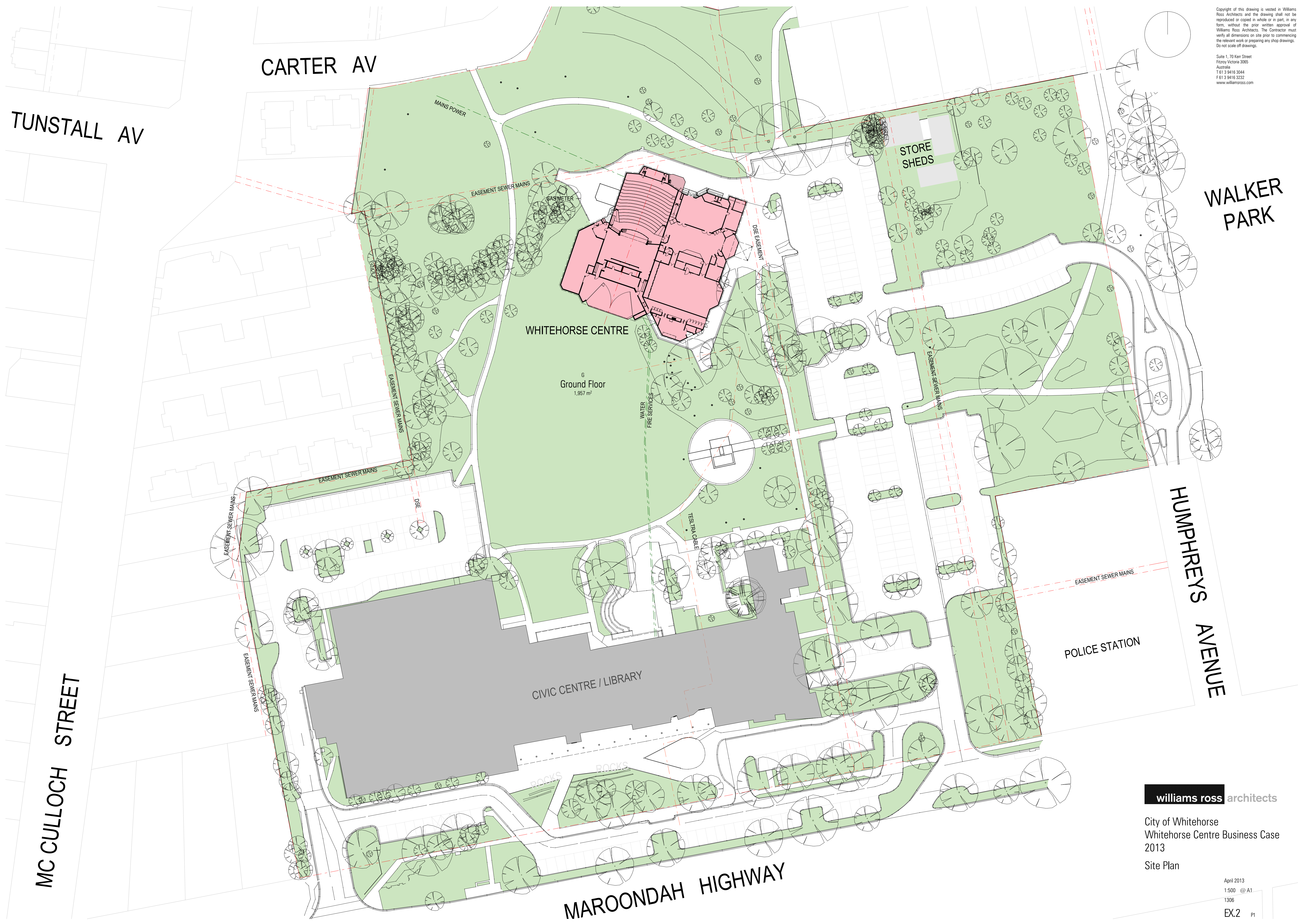
Location Plan

Copyright of this drawing is vested in Williams  
Ross Architects and the drawing shall not be  
reproduced or copied in whole or in part, in any  
form, without the prior written approval of  
Williams Ross Architects. The Contractor must  
verify all dimensions on site prior to commencing  
the relevant work or preparing any shop drawings.  
Do not scale off drawings.

Suite 1, 70 Kerr Street  
Fitzroy Victoria 3065  
Australia  
T 61 3 9416 3044  
F 61 3 9416 3232  
www.williamsross.com

April 2013  
1:1000 @ A1  
1306  
EX.1 P1



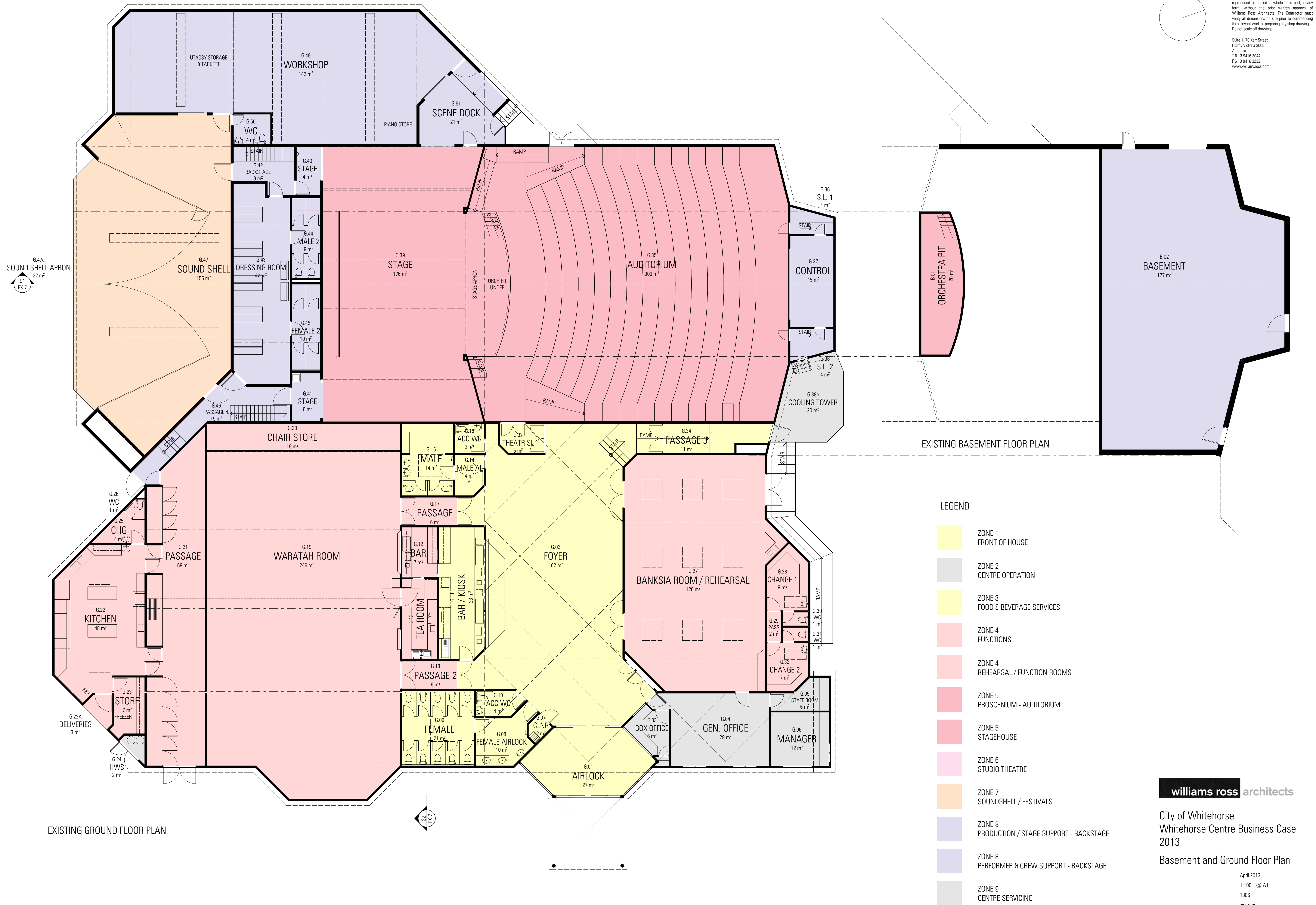
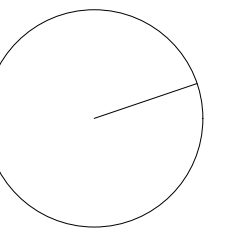


**williams ross architects**

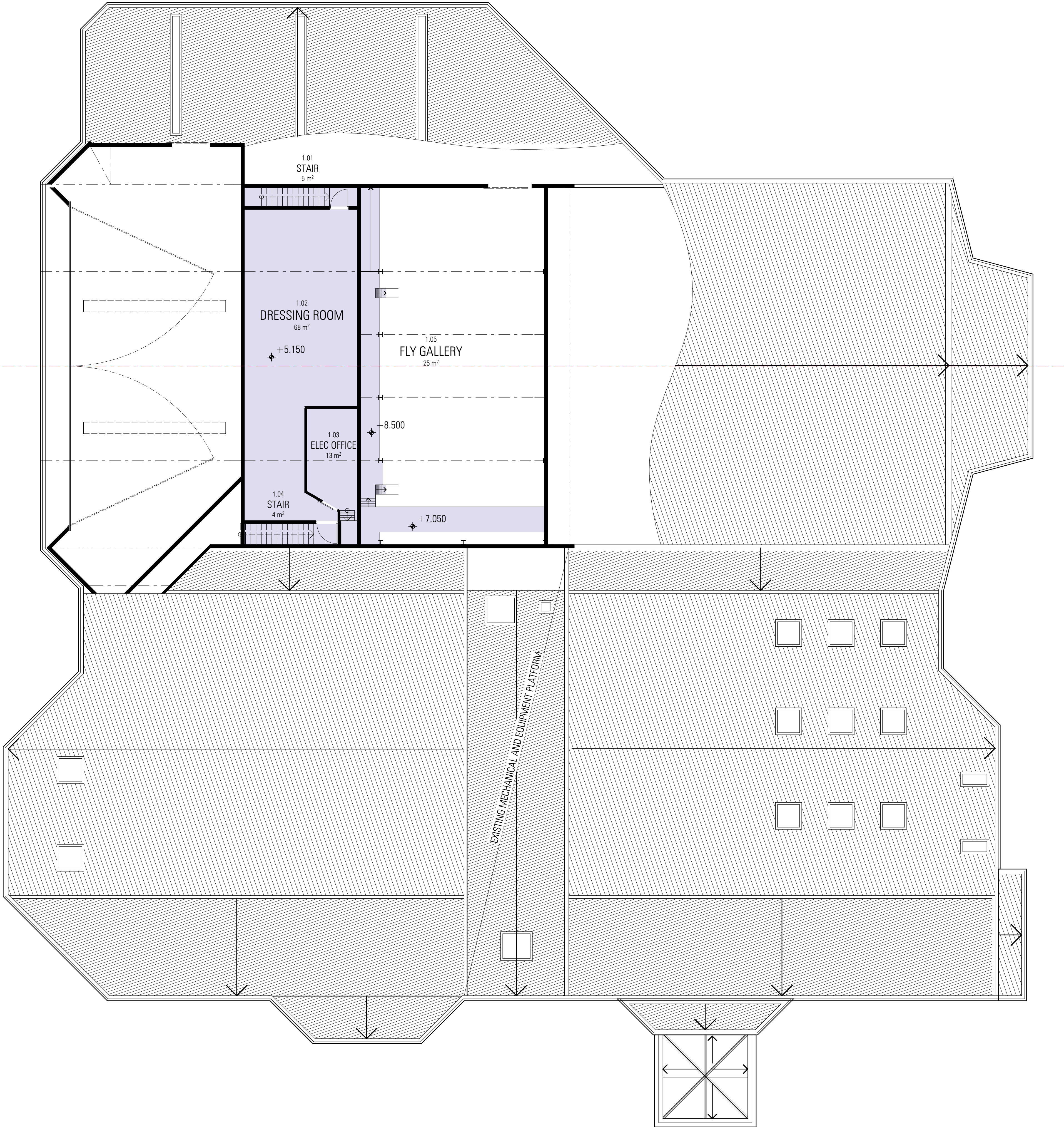
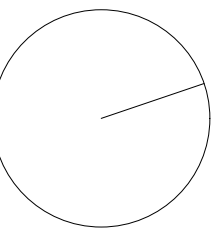
City of Whitehorse  
Whitehorse Centre Business Case  
2013

Site Plan









LEGEND

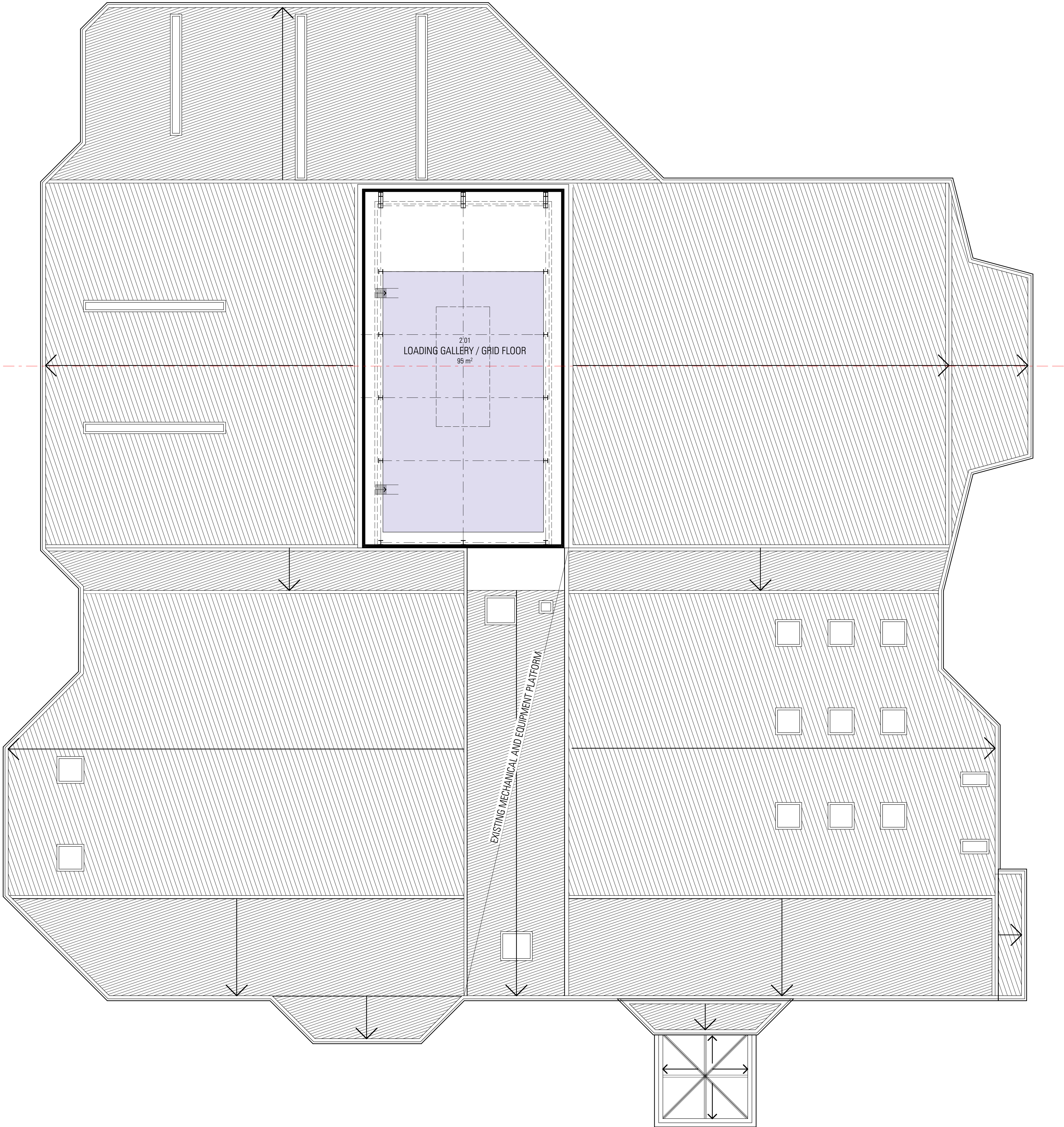
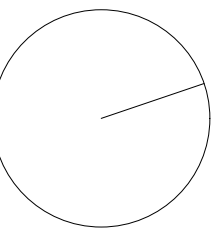
- ZONE 1  
FRONT OF HOUSE
- ZONE 2  
CENTRE OPERATION
- ZONE 3  
FOOD & BEVERAGE SERVICES
- ZONE 4  
FUNCTIONS
- ZONE 4  
REHEARSAL / FUNCTION ROOMS
- ZONE 5  
PROSCENIUM - AUDITORIUM
- ZONE 5  
STAGEHOUSE
- ZONE 6  
STUDIO THEATRE
- ZONE 7  
SOUNDSHELL / FESTIVALS
- ZONE 8  
PRODUCTION / STAGE SUPPORT - BACKSTAGE
- ZONE 8  
PERFORMER & CREW SUPPORT - BACKSTAGE
- ZONE 9  
CENTRE SERVICING

**williams ross architects**

City of Whitehorse  
Whitehorse Centre Business Case  
2013

First Floor Plan

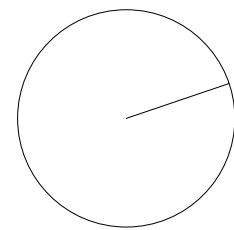




LEGEND

- ZONE 1  
FRONT OF HOUSE
- ZONE 2  
CENTRE OPERATION
- ZONE 3  
FOOD & BEVERAGE SERVICES
- ZONE 4  
FUNCTIONS
- ZONE 4  
REHEARSAL / FUNCTION ROOMS
- ZONE 5  
PROSCENIUM - AUDITORIUM
- ZONE 5  
STAGEHOUSE
- ZONE 6  
STUDIO THEATRE
- ZONE 7  
SOUNDSHELL / FESTIVALS
- ZONE 8  
PRODUCTION / STAGE SUPPORT - BACKSTAGE
- ZONE 8  
PERFORMER & CREW SUPPORT - BACKSTAGE
- ZONE 9  
CENTRE SERVICING

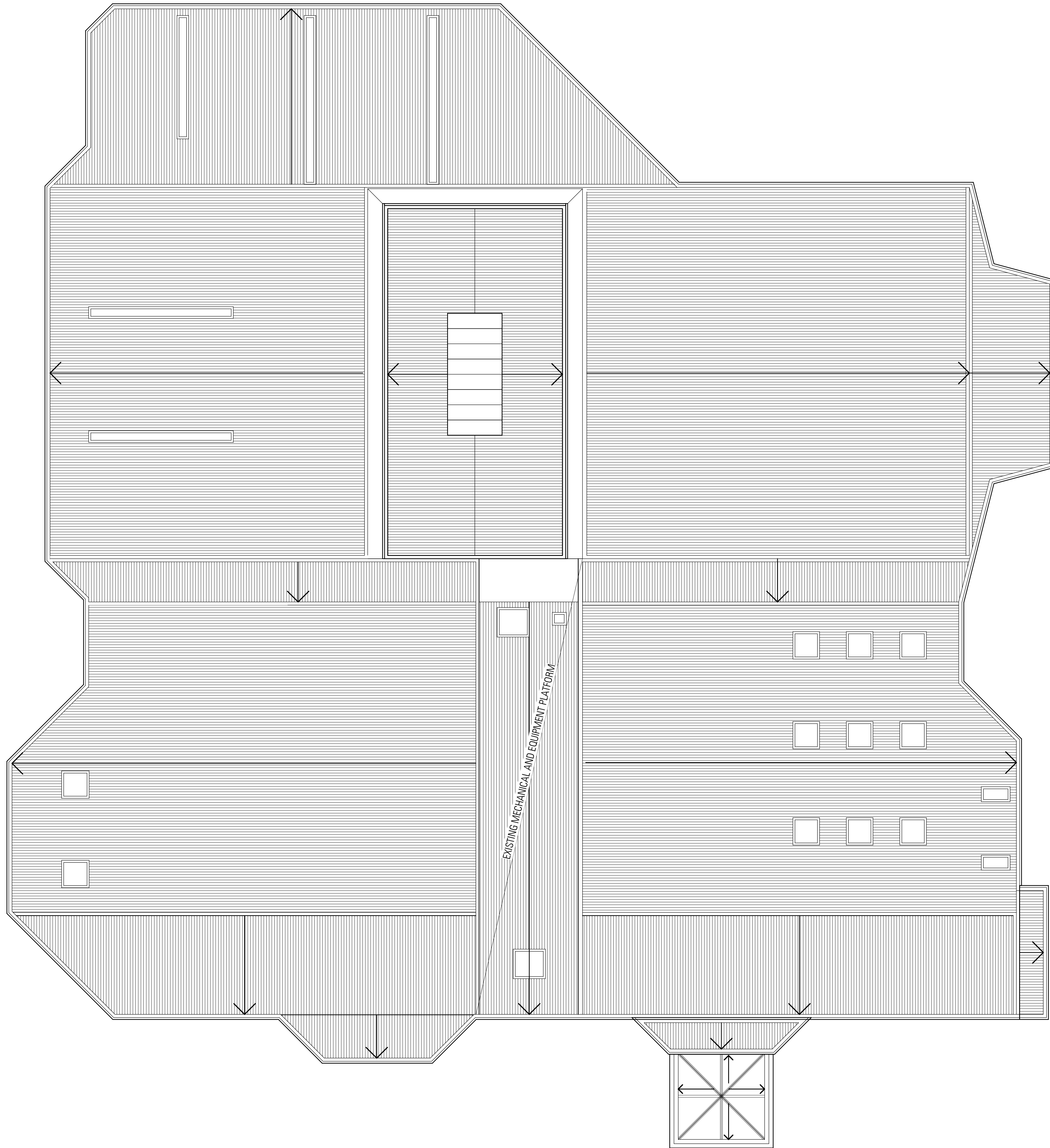




Copyright of this drawing is vested in Williams  
Ross Architects and the drawing shall not be  
reproduced or copied in whole or in part, in any  
form, without the prior written approval of  
Williams Ross Architects. The Contractor must  
verify all dimensions on site prior to commencing  
the relevant work or preparing any shop drawings.  
Do not scale off drawings.

Suite 1, 70 Kerr Street  
Fitzroy Victoria 3065  
Australia  
T 61 3 9416 3044  
F 61 3 9416 3232  
www.williamsross.com

S1  
EX.7



**williams ross architects**

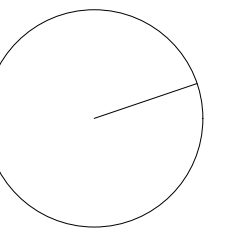
City of Whitehorse  
Whitehorse Centre Business Case  
2013

Roof Plan

April 2013  
1:100 @ A1  
1306

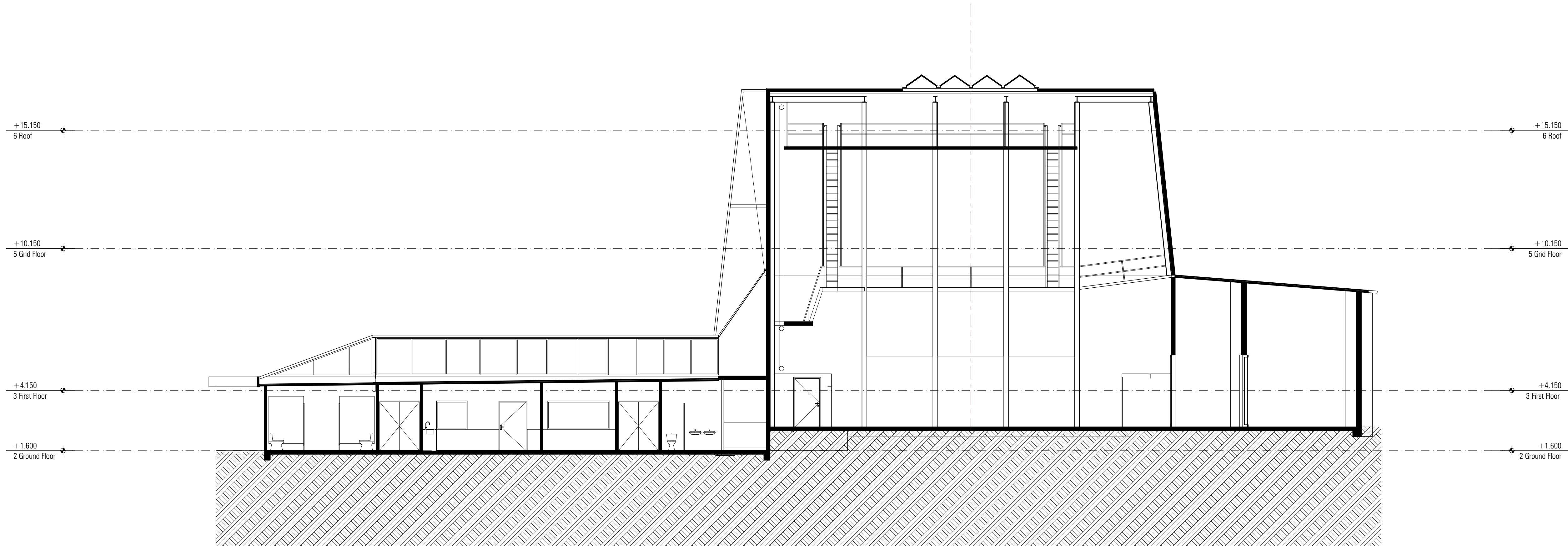
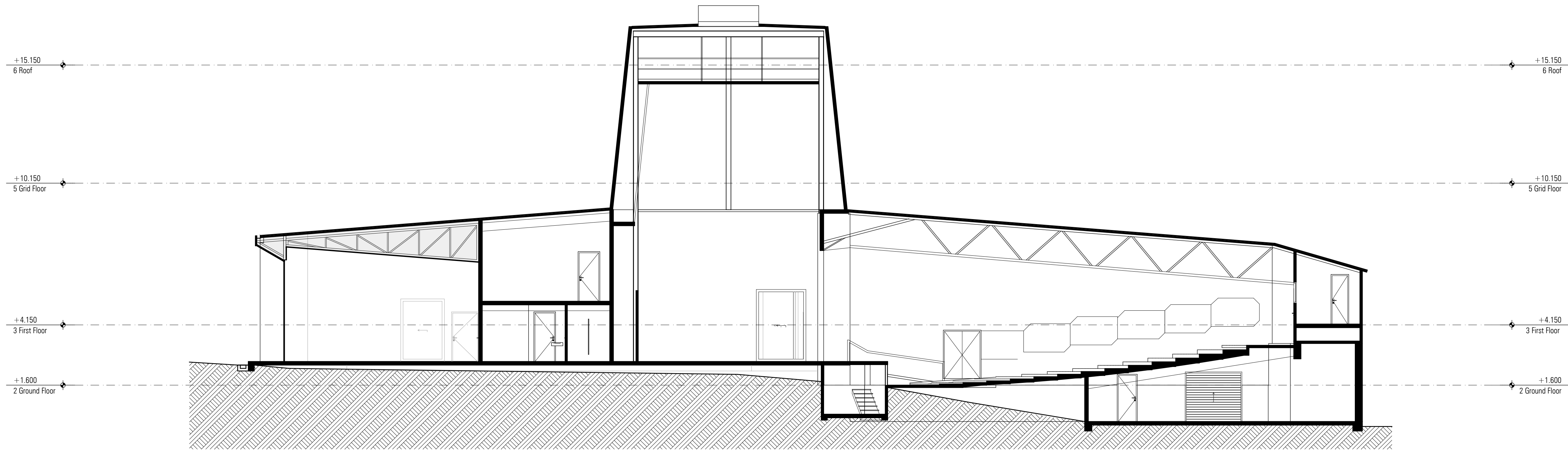
EX.6 P1





Copyright of this drawing is vested in Williams  
Ross Architects and the drawing shall not be  
reproduced or copied in whole or in part, in any  
form, without the prior written approval of  
Williams Ross Architects. The Contractor must  
verify all dimensions on site prior to commencing  
the relevant work or preparing any shop drawings.  
Do not scale off drawings.

Suite 1, 70 Kerr Street  
Fitzroy Victoria 3065  
Australia  
T 61 3 9416 3044  
F 61 3 9416 3232  
www.williamsross.com



**williams ross architects**

City of Whitehorse  
Whitehorse Centre Business Case  
2013

Sections

April 2013  
1:100 @ A1  
1306

EX.7 P1